



GIN-YEH
TECHNOLOGY

www.GINYEh.com.tw



About GIN-YEH

地址	桃園市楊梅區泰圳路441巷27號
ADDRESS	NO.27, LN. 441, TAIZUN RD., YANGMEI DIST., TAOYUAN CITY 326, TAIWAN (R.O.C.)
設立	西元1977年
ESTABLISHMENT	1977 A.D.
資本額	2億元
CAPITAL	200 MILLION NTD

Millstone

1. 1977年，於桃園縣八德市成立精鍊強韌鑄鐵股份有限公司。

以濕砂造模、CO2造模與呋喃造模方式生產，年產鑄件3000公噸。

鑄造部品應用於傳統車床類、工作母機及產業機械，成為米漢納授權工廠。

Established at Bade Dist., Taoyuan City, Taiwan in 1977. Producing by green sand mold、CO2 process and furan no-bake molding lines, the capacity is 3000 tons iron casting annually for lathe, machine tools and General Machinery Application. Becoming Meehanite certificated foundry.

2. 1992年，遷廠至桃園縣楊梅市，佔地6,600平方米。

以2座2噸中週波電爐熔解，年產鑄件10,000公噸。

Moved to Yangmei Dist., Taoyuan City, Taiwan in 1992, the working space is 6,600m². Two sets of two-ton medium frequency induction furnace with furan no-bake molding lines were completed to produce 10,000 tons iron casting annually.

3. 2008年改組成立精冶科技、一期廠房落成啟用，佔地24,000平方米。

以2座5噸中週波電爐熔解，以呋喃造模方式生產，年產鑄件20,000公噸。

To provide superior quality casting, invest advanced equipment and increase business performance, we reorganized and renamed as Gin-Yeh Technology Industry Co., Ltd. in 2008, the 1st working space is 24,000m², two sets of five-ton medium frequency induction furnace with furan no-bake molding lines were completed to produce 20,000 tons iron casting annually.

4. 導入ERP作業系統，並取得ISO9001：2008認證。

2015年，二期廠房籌備中，佔地25,500平方米，年產量預計25000噸。

成立國外業務部，將全力投入外銷市場。

Introducing ERP system and ISO9001：2008 certification. The 2nd working place is 25,500m² in rapid preparation, the production capacity is about 25,000 tons per year. Founding international sales department to export to overseas market.



Production Capacity

產品類型 PRODUCT RANGE

工作母機 / Machine Tools
產業機械 / General Machinery Application
汽車沖壓模具 / Automobile Press Mold

最大尺寸 MAXIMUM DIMENSION

汽車沖壓模 / Automobile Press Mold 2500 ~ 3000 (mm)
工具機械 / Machine Tools 7000 x 2000 (mm)

最大重量 MAXIMUM WEIGHT

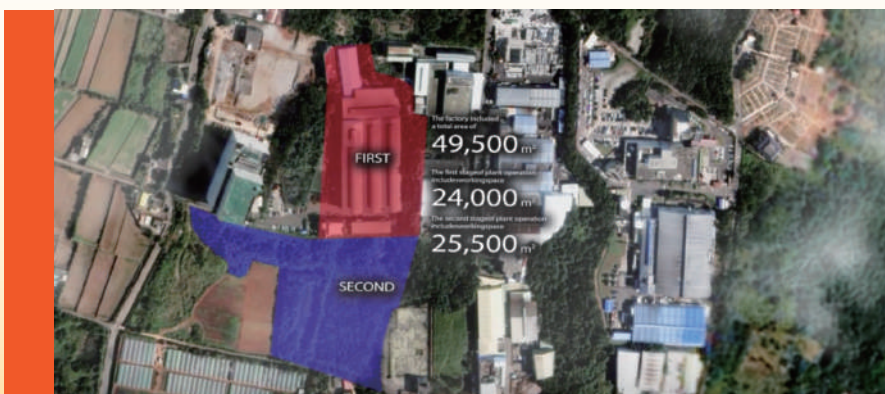
12 噸 / 12 tons for one casting

材質 MATERIAL

	灰口鑄鐵 / GREY CAST IRON	球墨鑄鐵 / DUCTILE CAST IRON
CNS	G3038 / FC250 ~ FC350	G2118 / FCD450 ~ FCD700
JIS	G5501 / FC250 ~ FC350	G5502 / FCD450-10 ~ FCD700-2
ASTM	A48M / 250 ~ 350	A536 / 70-50-05 ~ 100-70-3
MEEHANITE	GD250 ~ GA350	SF420 ~ SH700

工廠概要 FOUNDRY INFORMATION

佔地面積	WORKING SPACE	49,500 m ²
第一期廠區	1st PLANT OPERATION	24,000 m ²
第二期廠區	2nd PLANT OPERATION	籌備中 / In Preparation
從業員數	EMPLOYEE	120 名 / 120 members
品管人員	QC STAFF	6 名 / 6 members
事務人員	OFFICE WORKER	16 名 / 16 members
現場作業員	OPERATOR	98 名 / 98 members



土地總面積15,000坪
(About 49,500 m²)

Production Flow

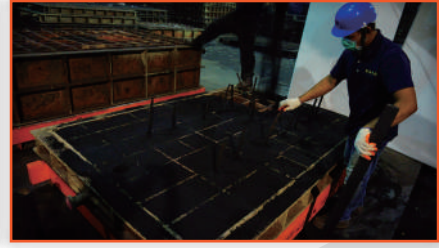




1 | 木型檢修
Wood Pattern Setting



2 | 砂心製作
Sand Core Making



3 | 造模
Molding



4 | 合模
Mold Assembling



5 | 熔解
Melting



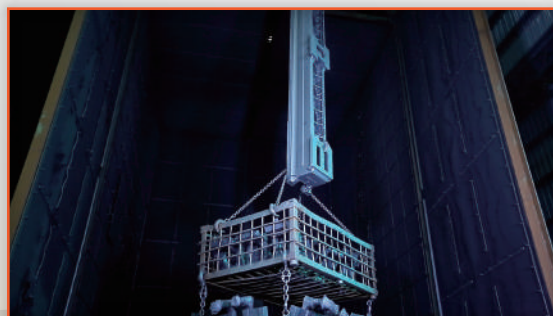
6 | 澆鑄
Pouring



7 | 清砂
Shake-out



8 | 退火
Annealing



9 | 洗砂
Sand-Blasting

Foundry Facility



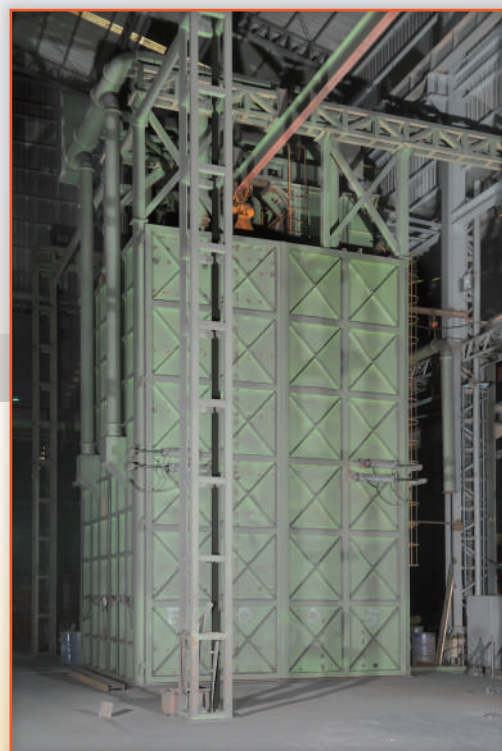
1 | 混練機 (10T/H) x 6台
Furan No-bake Molding Lines (10 ton/h) x 6 sets



2 | 中週波熔解電爐 (5T) x 2台
Five-ton Medium Frequency Induction Furnace x 2 sets

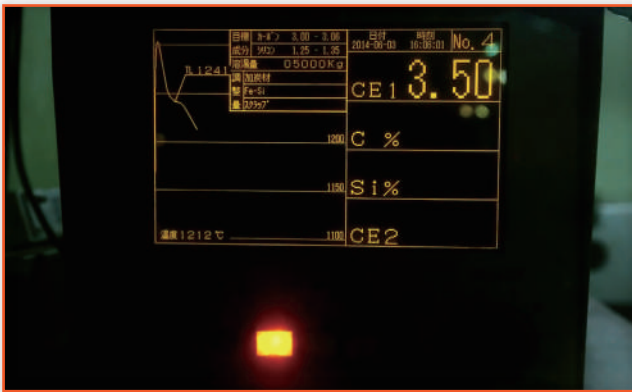


3 | 雙門雙台車式退火爐 (9m×4m×4m) x 1台
Double Door, Double Trolley Annealing Furnace
(9 m x 4 m x 4 m) x 1 set



4 | 懸掛式噴砂機 (4m×4m×9m) x 1台
Hanger Type Shot Blast Machine
(4 m x 4 m x 9 m) x 1 set

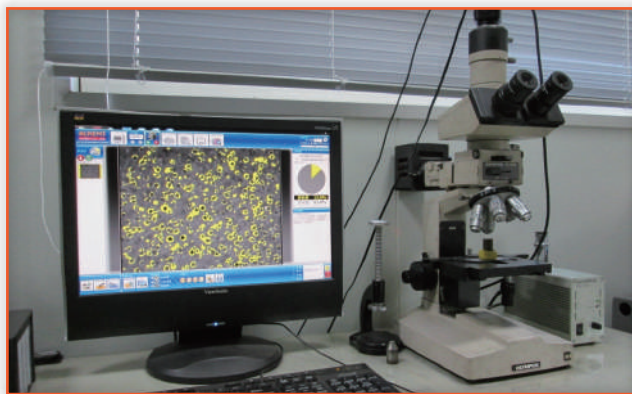
Quality Assurance Facility



1 | CE值檢測設備 x 1台
CE-meter x 1 set



2 | 分光分析儀 x 2台
Spectrometer x 2 sets



3 | 金相組織檢驗儀 x 1台
Metallurgical Microscope x 1 set

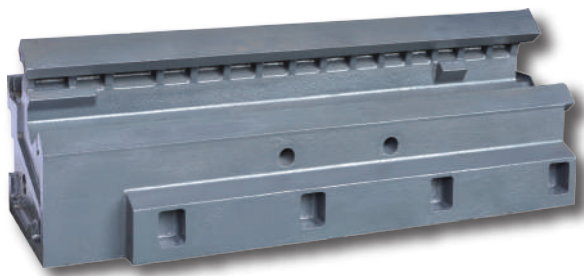


4 | 萬能試驗機(50T) x 1台
Universal Testing Machine (50 Ton) x 1 set



5 | 卡氏水份滴定儀 (容量滴定方式) [MKV-710M] x 1台
Karl Fischer Moisture Titrator
(Volumetric titration) [MKV-710M] x 1 set

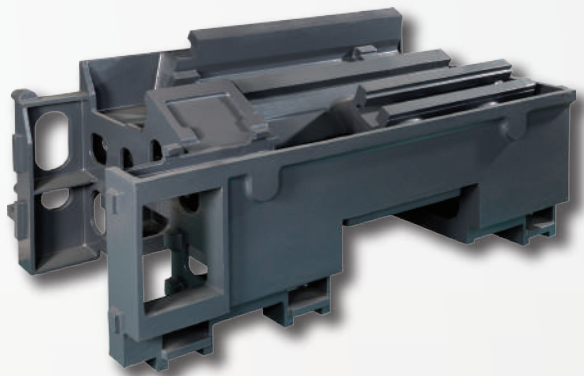
Products



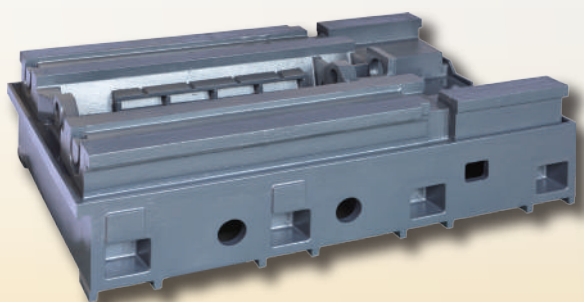
名稱 / Name	床身 / Bed
材質 / Material	FC300
重量 / Weight	1050 kg
尺寸 / Dimension	1720 x 600 x 602 mm



名稱 / Name	底座 / Bed
材質 / Material	FC300
重量 / Weight	1618 kg
尺寸 / Dimension	2300 x 900 x 850 mm

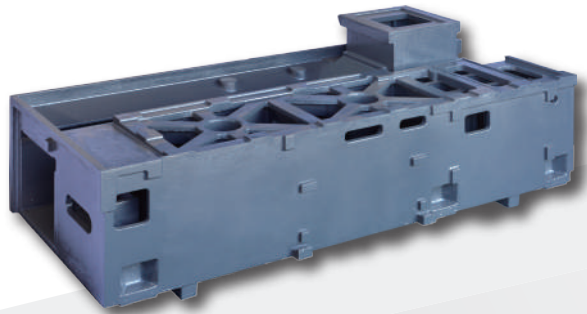


名稱 / Name	底座 / Bed
材質 / Material	FC300
重量 / Weight	1625 kg
尺寸 / Dimension	1950 x 1100 x 900 mm

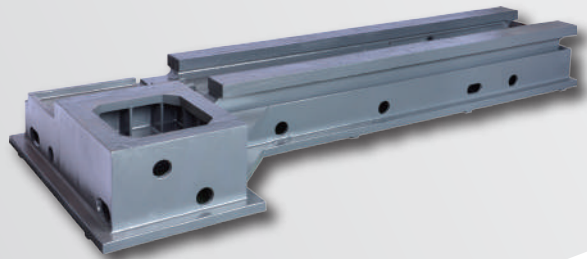


名稱 / Name	底座 / Bed
材質 / Material	FC300
重量 / Weight	1907 kg
尺寸 / Dimension	1950 x 1340 x 550 mm

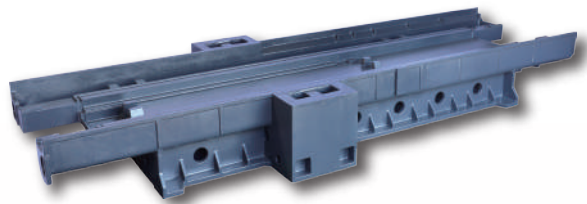
名稱 / Name | 腳座 / Box Stand
材質 / Material | FC300
重量 / Weight | 2918 kg
尺寸 / Dimension | 2510 x 1186 x 822 mm



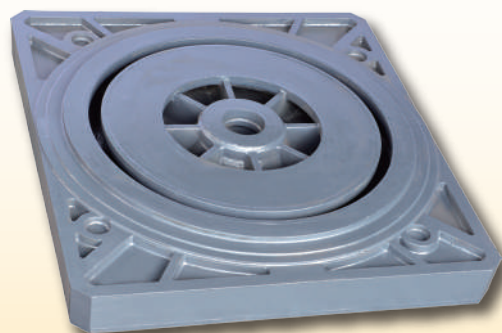
名稱 / Name | 底座 / Bed
材質 / Material | FC300
重量 / Weight | 3456 kg
尺寸 / Dimension | 4300 x 1680 x 510 mm



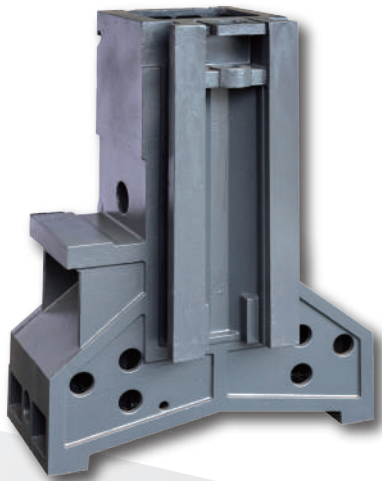
名稱 / Name | 底座 / Bed
材質 / Material | FC300
重量 / Weight | 6076 kg
尺寸 / Dimension | 4495 x 2008 x 608 mm



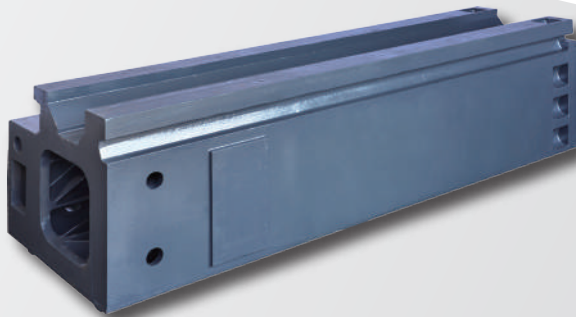
名稱 / Name | 工作台 / Table
材質 / Material | FC300
重量 / Weight | 2486 kg
尺寸 / Dimension | 1406 x 1406 x 230 mm



Products



名稱 / Name	立柱 / Column
材質 / Material	FC300
重量 / Weight	1285 kg
尺寸 / Dimension	1250 x 550 x 1900 mm



名稱 / Name	立柱 / Column
材質 / Material	FC300
重量 / Weight	4456 kg
尺寸 / Dimension	3170 x 1080 x 885 mm



名稱 / Name	門橋 / Bridge
材質 / Material	FC300
重量 / Weight	2616 kg
尺寸 / Dimension	2400 x 630 x 1800 mm



名稱 / Name	門橋 / Bridge
材質 / Material	FC300
重量 / Weight	5980 kg
尺寸 / Dimension	2966 x 1028 x 2092 mm



本公司在業界擁有非常高的知名度，尤其以其材質控制嚴謹交貨品質穩定馳名於工具機界。更有豐富經驗的技術團隊，深知工具機產品的製造及使用特性，從原料選擇與檢驗開始，到產品最終檢驗各製程，進行嚴格的管理。為求提昇競爭力，本公司不斷開發多項先進技術並投入生產，以滿足顧客之需求。

2015年，本公司購入25500m²工廠用地，用來擴建工廠。擴廠完成後，年產量預計達到25000噸。同時，本公司正式成立國外業務部，將全力投入外銷市場，把高品質高質量之產品推向國際舞台，朝世界大廠目標前進。

Stringent production control, stable casting quality from Gin-Yeh has won lots of reputation in the machine tool industry. By means of long term working experience and metallurgical knowledge in machine tool casting production, a precise procedure from raw material selection to production inspection has been adopted in the plant. There are 25500m² building site for 2nd plant operation in rapid preparation, we expect the capacity will be 25,000 tons per year. We have also founded international sales department to export to overseas market from 2015 to serve international customers.



精冶科技工業股份有限公司
GIN-YEH TECHNOLOGY INDUSTRY CO., LTD.

Address : No.27, Ln. 441, Taizun Rd., Yangmei Dist., Taoyuan City 326, Taiwan (R.O.C.)

TEL : +886-3-4750631

FAX : +886-3-4782968

Website : www.GINYEh.com.tw

E-mail : gysever@ginyeh.com.tw

